

INSTRUMENT DEPARTURE CHART

AD ELEV 1287

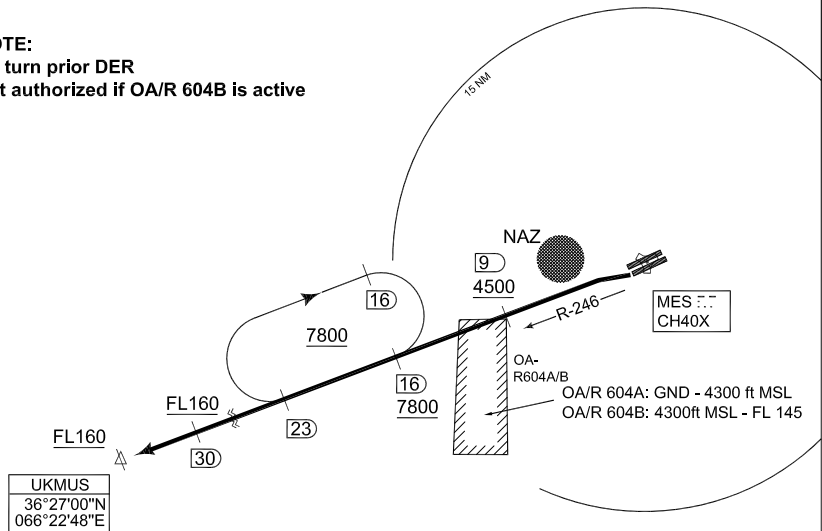
**UKMUS 1L
MAZAR-e-SHARIF (OAMS)**

TOWER 135.350 391.950		MAZAR CONTROL 121.250 399.550				KABUL CENTRE 118.300 126.325 242.600				
--------------------------	--	----------------------------------	--	--	--	---	--	--	--	--

RWY	from - to	60	120	180	240	300	360	Reason
24L	DER - 4500	394	788	1182	1576	1970	2364	ATC
	4500 - 7800	358	716	1074	1432	1790	2148	ATC
no Orbit	DER - FL160	504	1008	1512	2016	2520	3024	ATC



NOTE:
No turn prior DER
Not authorized if OA/R 604B is active



CHANGE: NEW PROCEDURE

EMERG SAFE ALT 100 NM 16000

TA 14000

UKMUS 1L
(RWY 24L)

- Climb on MES R-246 to UKMUS
 - Pass MES/9 DME at 4500ft or above and MES/16 DME at 7800ft or above
 - Cross MES R-246/30 DME at FL160 or above
- If Orbit is required:
- Enter Orbit (MES R-246 between 23 DME and 16 DME, right turns)
 - Climb within Orbit to ensure to cross MES R-246/30 DME at FL160 or above

UKMUS 1L

36°42.42'N
067°12.56'E

MAZAR-e-SHARIF (OAMS)

AFSBw 03 FEB 2010