

INSTRUMENT DEPARTURE CHART

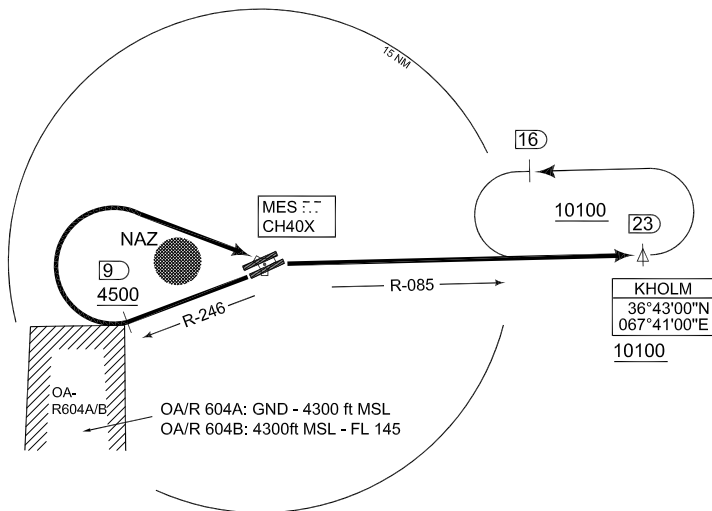
AD ELEV 1287

**KHOLM 1L
MAZAR-e-SHARIF (OAMS)**

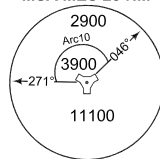
TOWER 135.350 391.950		MAZAR CONTROL 121.250 399.550				KABUL CENTRE 118.300 126.325 242.600			
RWY	from - to	60	120	180	240	300	360	Reason	
24L	DER - 4500	407	814	1221	1628	2035	2442	ATC	



NOTE:
Not authorized if OA/R 604B is active



MSA MES 25 NM



EMERG SAFE ALT 100 NM 16000

TA 14000

**KHOLM 1L
(RWY 24L)**

- Climb on MES R-246 to 9 DME
- Pass MES R-246/9 DME at 4500ft or above
- Turn right inbound MES
- Proceed on MES R-085 to KHOLM
- Cross KHOLM at 10100ft or above
- Enter Orbit KHOLM (MES R-085 between 23 DME and 16 DME, left turns)
- Climb within Orbit until reaching appropriate FL for succeeding airways

KHOLM 1L

36°42.42'N
067°12.56'E

MAZAR-e-SHARIF (OAMS)

CHANGE: NEW CHART

AFSBw 03 FEB 2010