

INSTRUMENT APPROACH CHART

AD ELEV 1287

TACAN Y RWY 24L MAZAR-e-SHARIF (OAMS)

KABUL CENTRE 126.325 118.300 242.600			MAZAR CONTROL 121.250 399.550		MAZAR TOWER 135.350 391.950			
TACAN MES CH40X	APP COURSE 247°	FAF ALT 2900	Descent GR 5.2%	MDA 1740	TDZE 1270	ALS (N)	LDA 9843	

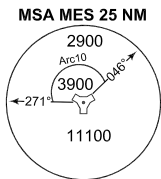
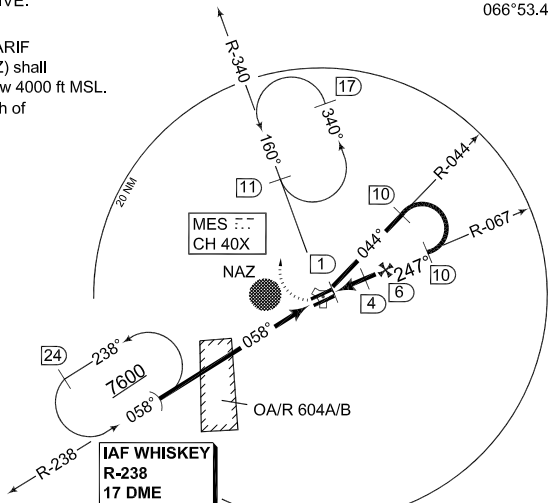
WARNING:

- a) PROCEDURE NOT AUTHORIZED WHEN OA/R 604 B IS ACTIVE.

NOTE:

- b) Overflight of MAZAR-E SHARIF noise abatement zone (NAZ) shall be avoided at altitudes below 4000 ft MSL.
- Circling not authorized south of RWY 06/24.

IAF WHISKEY
36°36.06'N
066°53.40'E

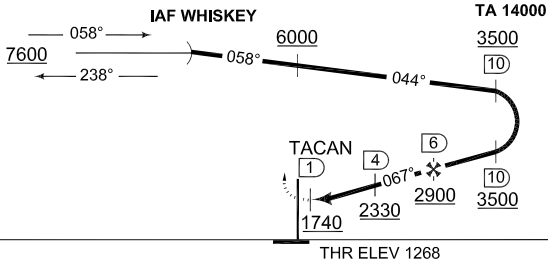


EMERG SAFE ALT 100 NM 16000

MISSED APPROACH

Turn right to intercept R-340. Proceed to missed approach TACAN holding, climbing to 5000 ft and follow ATC instructions.

Missed approach and missed approach holding limited to 250kt IAS maximum. No turn before MAPt. Timing not authorized for defining MAPt.



CHANGE NEW PROCEDURE

CATEGORY	A	B	C	D	E
TACAN 24L	1740 - 0.8 470 (500-0.8/1.6)		1740 - 1.2 470 (500-1.2/2.0)	1740 - 1.6 470 (500-1.6/2.4)	1740 - 2.0 470 (500-2.0/2.8)
● CIRCLING	1800 - 1.9 513 (600-1.9)	1880 - 2.8 593 (600-2.8)	2030 - 3.7 743 (800-3.7)	2120 - 4.6 833 (900-4.6)	2290 - 6.5 1003 (1100-6.5)

TACAN Y RWY 24L

36°42.42'N
067°12.56'E

MAZAR-e-SHARIF (OAMS)

OAMS ATS 27 JAN 2010