

**INSTRUMENT DEPARTURE CHART**

AD ELEV 1287

**AMDAR 1K - 1L  
MAZAR-e-SHARIF (OAMS)**

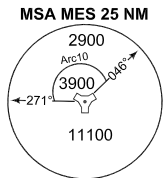
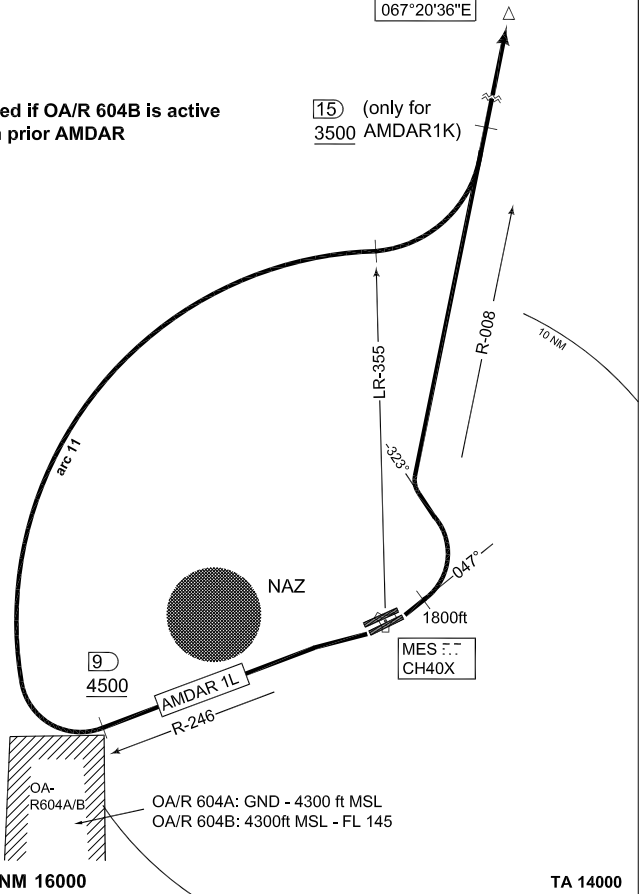
TOWER 135.350 391.950		MAZAR CONTROL 121.250 399.550				KABUL CENTRE 118.300 126.325 242.600			
RWY	from - to	60	120	180	240	300	360	Reason	
24L	DER - 4500	394	788	1182	1576	1970	2364	ATC	



AMDAR  
37°12'30"N  
067°20'36"E

**NOTE:**  
No turn before DER  
AMDAR 1L not authorized if OA/R 604B is active  
Contact Termerz 10 min prior AMDAR

15 (only for 3500 AMDAR1K)



9 4500

MES CH40X

OA/R 604A: GND - 4300 ft MSL  
OA/R 604B: 4300ft MSL - FL 145

**EMERG SAFE ALT 100 NM 16000**

**TA 14000**

AMDAR 1K (RWY 06R)	<ul style="list-style-type: none"> <li>- Climb on track 047° to 1800ft</li> <li>- Turn left on track 323° to intercept MES R-008 to AMDAR</li> <li>- Cross MES/15 DME at 3500ft or above</li> <li>- Cross AMDAR as assigned by ATC</li> </ul>
AMDAR 1L (RWY 24L)	<ul style="list-style-type: none"> <li>- Climb on MES R-246/9 DME, pass MES R-246/9 DME at 4500ft or above</li> <li>- Turn right to follow MES ARC 11 until LR-355</li> <li>- Turn left to intercept MES R-008 to AMDAR</li> <li>- Cross AMDAR as assigned by ATC</li> </ul>

**AMDAR 1K - 1L**

36°42.42'N  
067°12.56'E

**MAZAR-e-SHARIF (OAMS)**

CHANGE: NEW PROCEDURES

AFSBw 03 FEB 2010