

# INSTRUMENT APPROACH CHART

AD ELEV 1287

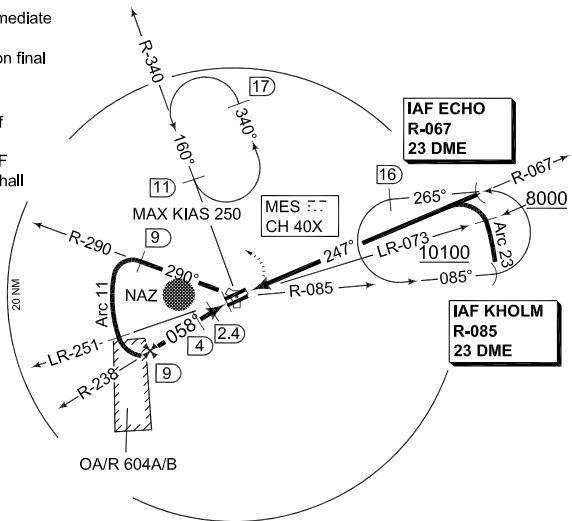
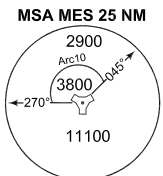
**TACAN Y RWY 06R**  
**MAZAR-e-SHARIF (OAMS)**

KABUL CENTRE 126.325 118.300 242.600			MAZAR CONTROL 121.250 399.550		MAZAR TOWER 135.350 391.950			
TACAN MES CH40X	APP COURSE 058°	FAF ALT 4500	Descent GR 6.4%	MDA see CAT	TDZE 1287	ALS (N)	LDA 9843	

- WARNING:**  
a) PROCEDURE NOT AUTHORIZED WHEN OA/R 604 B IS ACTIVE.  
**CAUTION:**  
b) Non standard procedure, intermediate segment reduced to 2NM.  
c) For Cat C-E descent gradient on final raised to **6.4%** (395 ft/NM).

- NOTE:**  
④ Circling not authorized south of RWY 06/24.  
e) Overflight of MAZAR-E SHARIF noise abatement zone (NAZ) shall be avoided at altitudes below 4000 ft MSL.

IAF ECHO 36°50.06'N 067°39.41'E  
IAF KHOLM 36°43.00'N 067°41.00'E



**EMERG SAFE ALT 100 NM 16000**

**MISSED APPROACH**  
TA 14000  
Turn left to intercept R-340. Proceed to missed approach TACAN holding, climbing to 5000 ft and follow ATC instructions.

Missed approach and missed approach holding limited to 250kt IAS maximum. No turn before MAPt. Timing not authorized for defining MAPt.

THR ELEV 1287

CATEGORY	A	B	C	D	E
TACAN 06R	1820 - 1.2 533 (600-1.2)		1830 - 2.4 543 (600-2.4/3.2)	1830 - 2.8 543 (600-2.8/3.6)	1830 - 3.2 543 (600-3.2/4.0)
④ CIRCLING	1820 - 1.6 533 (600-1.6)	1860 - 1.6 573 (600-1.6)	2000 - 3.2 713 (800-3.2)	2060 - 4.0 733 (800-4.0)	2680 - 4.8 1393 (1400-4.8)

CHANGE: MINIMA, MSA (148/10)

OAMS ATS 06 MAY 2010

**TACAN Y RWY 06R**

36°42.42'N  
067°12.56'E

**MAZAR-e-SHARIF (OAMS)**