

INSTRUMENT APPROACH CHART

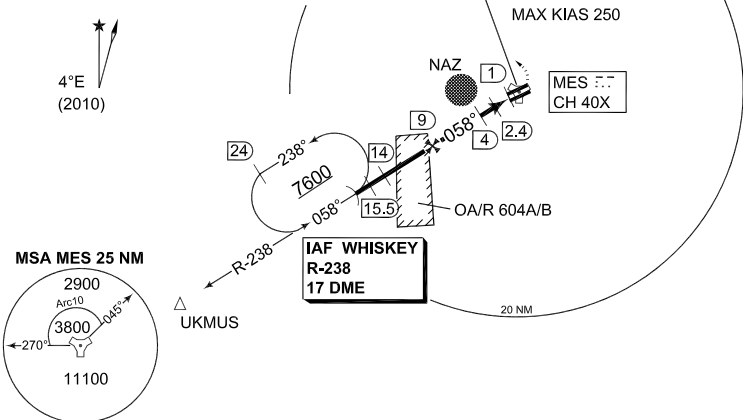
AD ELEV 1287

TACAN X RWY 06R
MAZAR-e-SHARIF (OAMS)

| | | | | | | | |
|---|--------------------|----------------------------------|--------------------|--------------------------------|--------------|------------|-------------|
| KABUL CENTRE 126.325 118.300 242.600 | | MAZAR CONTROL 121.250 399.550 | | MAZAR TOWER 135.350 391.950 | | | |
| TACAN MES CH40X | APP COURSE 058° | FAF ALT 4500 | Descent GR 6.4% | MDA see CAT | TDZE 1287 | ALS (N) | LDA 9843 |

- WARNING:**
a) PROCEDURE NOT AUTHORIZED WHEN OA/R 604 B IS ACTIVE.
- CAUTION:**
b) For Cat C-E non standard procedure, descent gradient on final raised to **6.4%** (395 ft/NM).
- NOTE:**
c) Circling not authorized south of RWY 06/24.
d) Overflight of MAZAR-E SHARIF noise abatement zone (NAZ) shall be avoided at altitudes below 4000 ft MSL.

IAF WHISKEY
36°34.45'N
066°54.34'E



EMERG SAFE ALT 100 NM 16000

IAF WHISKEY R-238

MISSED APPROACH
Turn left to intercept R-340. Proceed to missed approach TACAN holding, climbing to 5000 ft and follow ATC instructions.

TACAN
Missed approach and missed approach holding limited to 250kt IAS maximum. No turn before MAPt. Timing not authorized for defining MAPt.

THR ELEV 1287

| TA 14000 | A | B | C | D | E |
|-----------|--------------------------|--------------------------|------------------------------|------------------------------|------------------------------|
| TACAN 06R | 1820 - 1.2 533 (600-1.2) | | 1830 - 2.4 543 (600-2.4/3.2) | 1830 - 2.8 543 (600-2.8/3.6) | 1830 - 3.2 543 (600-3.2/4.0) |
| CIRCLING | 1820 - 1.6 533 (600-1.6) | 1860 - 1.6 573 (600-1.6) | 2000 - 3.2 713 (800-3.2) | 2060 - 4.0 733 (800-4.0) | 2680 - 4.8 1393 (1400-4.8) |

CHANGE: MINIMA, MSA (148/10)

OAMS ATS 06 MAY 2010

TACAN X RWY 06R

36°42.42'N
067°12.56'E

MAZAR-e-SHARIF (OAMS)