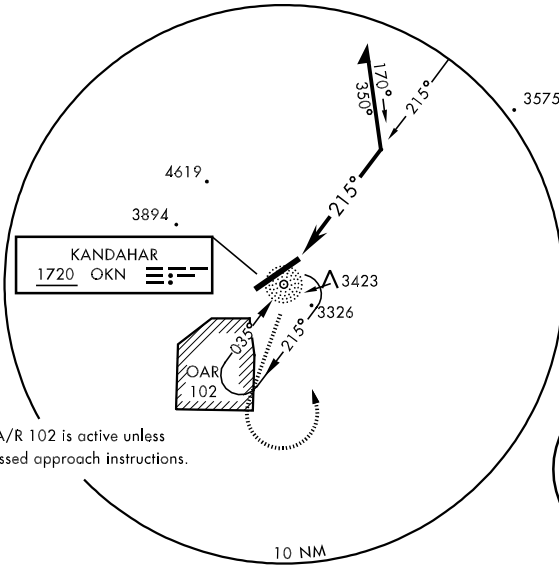


KANDAHAR, AFGHANISTAN

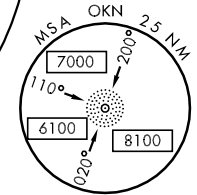
NDB RWY 23

NDB OKN 1720	APCH CRS 215°	Rwy Idg 10,500 TDZE 3338 Arpt Elev 3338	[USAF] AL 3085	KANDAHAR (OAKN)	
<p>▼ * Circling SE of airport not authorized.</p>			<p>ALSF-1</p>	<p>MISSED APPROACH: Climb on track 200° to 5300, then climbing left turn to OKN NDB and hold at 6000.</p>	
ATIS 127.025 242.675	KANDAHAR APP CON 131.475 280.825	KANDAHAR TOWER 125.5 360.2	GND CON 133.0 300.2	CLNC DEL 123.825 244.6	ASR/PAR

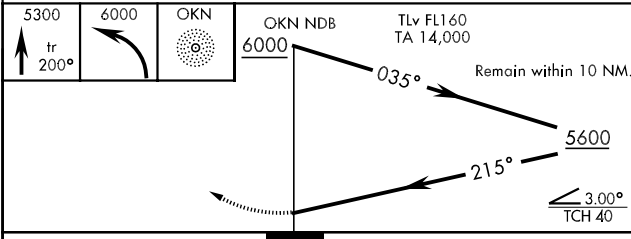
NOT FOR CIVIL USE



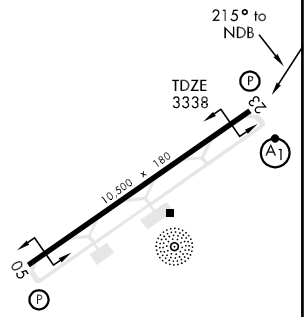
CAUTION:
Procedure NA when OA/R 102 is active unless ATC issues alternate missed approach instructions.



EMERG SAFE ALT 100 NM 15,800



ELEV 3338



CATEGORY	A	B	C	D
S-23	4100-1600m 762 (800-1600m)	4100-2000m 762 (800-2000m)	4100-3600m 762 (800-3600m)	4100-4000m 762 (800-4000m)
CIRCLING*	4100-1600m 762 (800-1600m)	4100-2000m 762 (800-2000m)	4100-3600m 762 (800-3600m)	4100-4000m 762 (800-4000m)
S-PAR 23	3538-1200m		200 (200-1200m)	GS 3.0°

KANDAHAR, AFGHANISTAN

31° 30'N-65° 51'E

KANDAHAR (OAKN)

Amdt 3 09183

NDB RWY 23

Effective 30 JUL 2009 - 27 AUG 2009