

WOVIS ONE DEPARTURE (RNAV)

SL-1190 [USAF]

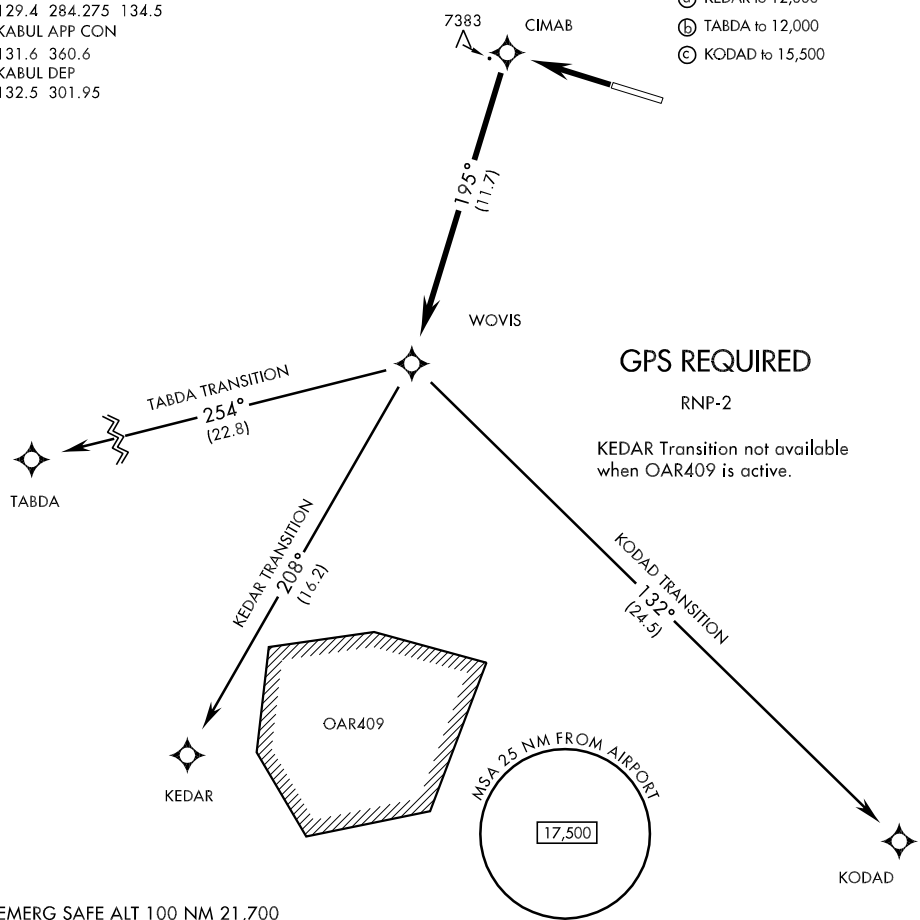
KABUL, AFGHANISTAN

ATIS 130.15
 GND CON
 120.3
 KABUL TOWER
 129.4 284.275 134.5
 KABUL APP CON
 131.6 360.6
 KABUL DEP
 132.5 301.95

Rwy	Knots	60	120	180	240
29 (A)(B)(C)	V/V(fpm)	430	860	1290	1720

Minimum Climb Rate

- (A) KEDAR to 12,000
- (B) TABDA to 12,000
- (C) KODAD to 15,500



EMERG SAFE ALT 100 NM 21,700



DEPARTURE ROUTE DESCRIPTION

Tlv FL160
 TA 14,000

TAKE-OFF RWY 29: Climb direct CIMAB then turn left track 195° direct WOVIS. Thence...

KEDAR TRANSITION: Turn right track 208° direct KEDAR and maintain assigned altitude.

KODAD TRANSITION: Turn left track 132° direct KODAD and maintain assigned altitude.

TABDA TRANSITION: Turn right track 254° direct TABDA and maintain assigned altitude.

WOVIS ONE DEPARTURE (RNAV)

KABUL, AFGHANISTAN
 KABUL INTL (OAKB)

Effective 29 JUL 2010 - 26 AUG 2010