

APCH CRS	Rwy Idg	11,483
285°	THRE	5872
	Arpt Elev	5877

AL-1190 [USAF]

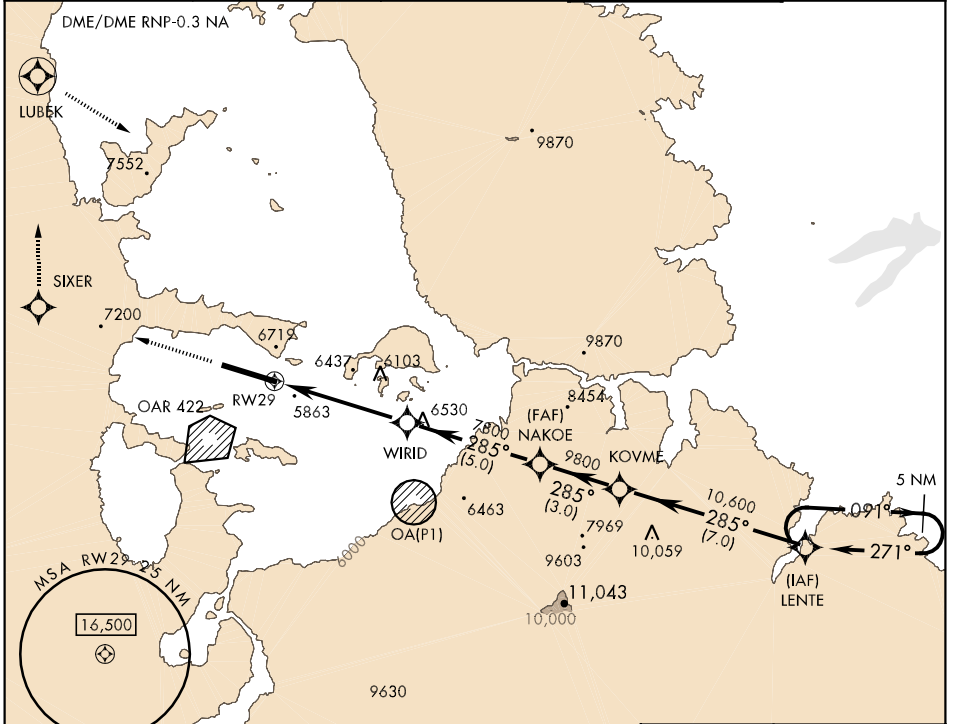
KABUL INTL (OAKB)

▼ \* When ALS inop, increase CAT A vis to 2000m, CAT B vis to 2400m, CAT CD vis to 4800m.  
 \*\* Circling not authorized south of Rwy 11-29. Night operations are not authorized for Rwy 11.

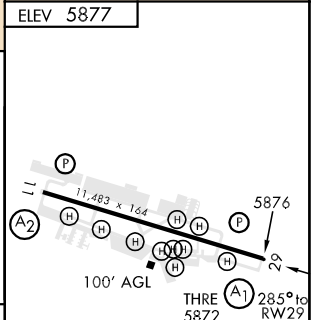
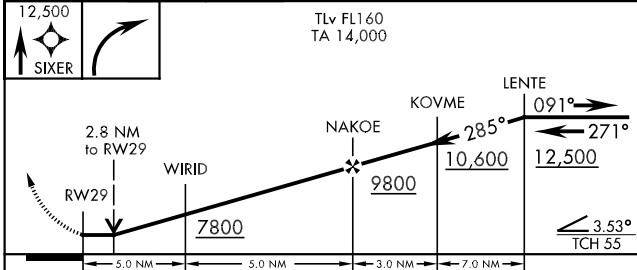


MISSED APPROACH: Climb to 12,500 direct SIXER, then turn right, track to LUBEK. After LUBEK, turn right direct LENTE. Maintain ATC assigned altitude and hold.

ATIS	KABUL APP CON	BAGRAM APP CON	KABUL TOWER	GND CON
130.15	131.6 360.6	133.35 379.3	129.4 284.275 134.5	120.30



EMERG SAFE ALT 100 NM 21,700



CATEGORY	A	B	C	D
LNVA MDA *	6980-1200m 1103 (1200-1200m)	6980-1600m 1103 (1200-1600m)	6980-4000m 1103 (1200-4000m)	
CIRCLING **	7080-2000m 1203 (1300-2000m)	7300-2400m 1423 (1500-2400m)	7540-4800m 1663 (1700-4800m)	

HIRL Rwy 11-29