

MURAD ONE DEPARTURE (RNAV)

SL-1190 [USAF]

KABUL INTL (OAKB)

KABUL, AFGHANISTAN

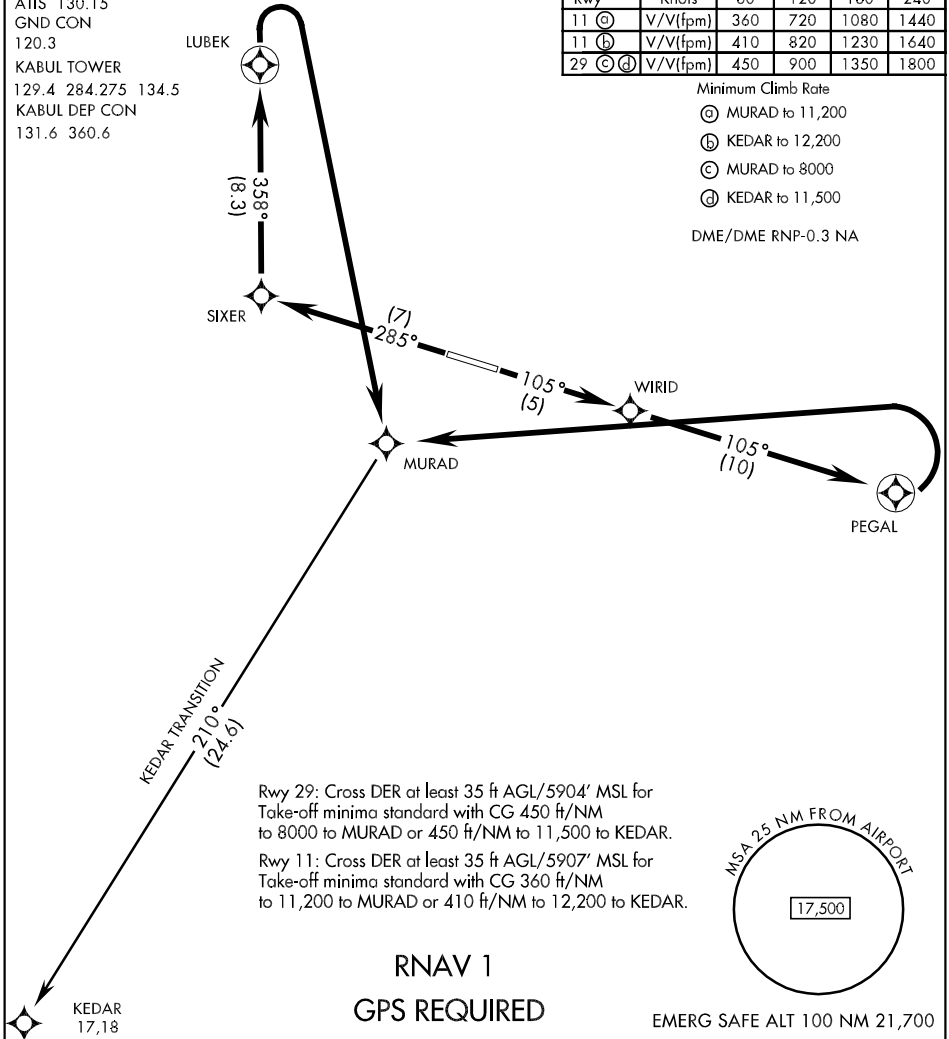
ATIS 130.15
 GND CON 120.3
 KABUL TOWER 129.4 284.275 134.5
 KABUL DEP CON 131.6 360.6

Rwy	Knots	60	120	180	240
11 (a)	V/V(fpm)	360	720	1080	1440
11 (b)	V/V(fpm)	410	820	1230	1640
29 (c) (d)	V/V(fpm)	450	900	1350	1800

Minimum Climb Rate

- (a) MURAD to 11,200
- (b) KEDAR to 12,200
- (c) MURAD to 8000
- (d) KEDAR to 11,500

DME/DME RNP-0.3 NA



Rwy 29: Cross DER at least 35 ft AGL/5904' MSL for Take-off minima standard with CG 450 ft/NM to 8000 to MURAD or 450 ft/NM to 11,500 to KEDAR.

Rwy 11: Cross DER at least 35 ft AGL/5907' MSL for Take-off minima standard with CG 360 ft/NM to 11,200 to MURAD or 410 ft/NM to 12,200 to KEDAR.

RNAV 1

GPS REQUIRED

EMERG SAFE ALT 100 NM 21,700

DEPARTURE ROUTE DESCRIPTION

TLv FL160
 TA 14,000

TAKE-OFF RWY 11: Climb via 105° direct WIRID, then track 105° to PEGAL. At PEGAL, turn left direct MURAD and maintain ATC assigned altitude.

TAKE-OFF RWY 29: Climb via 285° direct SIXER, then turn right and track 358° to LUBEK. At LUBEK, turn right direct MURAD and maintain ATC assigned altitude.

KEDAR TRANSITION: Depart MURAD direct KEDAR, maintain ATC assigned altitude.

MURAD ONE DEPARTURE (RNAV)

KABUL, AFGHANISTAN
 KABUL INTL (OAKB)

Effective 14 JAN 2010 - 11 FEB 2010