

KABUL ONE DEPARTURE

SL-1190 [USAF]

KABUL INTL (OAKB)

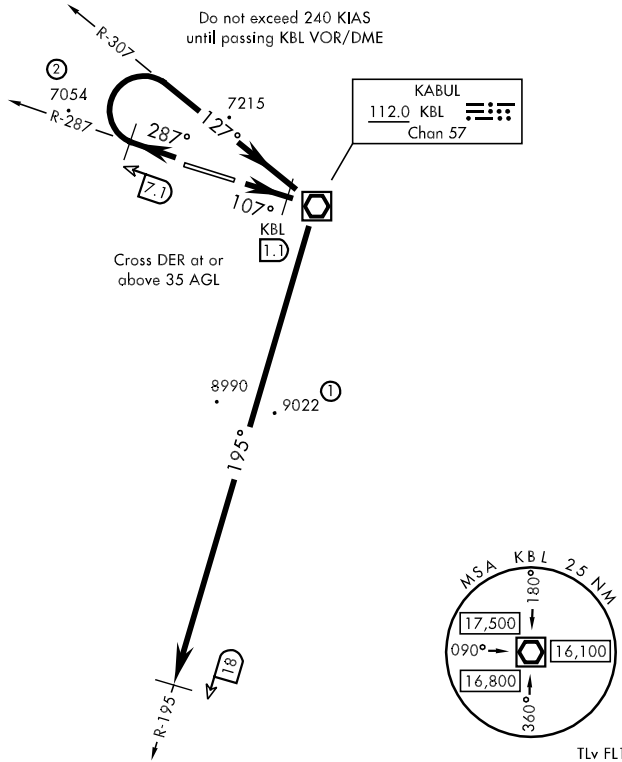
KABUL, AFGHANISTAN

ATIS 130.15
 GND CON
 120.3
 KABUL TOWER
 129.4 284.275 134.5
 KABUL DEP CON
 131.6 360.6

Rwy	Knots	60	120	180	240	300
11 (a)	V/V(fpm)	400	800	1200	1600	2000
29 (b)	V/V(fpm)	500	1000	1500	2000	2500

Minimum Climb Rate

- (a) To 9500
- (b) To 8000



- ① 8.3 NM from Rwy 11
- ② 4.6 NM from Rwy 29

EMERG SAFE ALT 100 NM 21,700

TLv FL160
 TA 14,000

DEPARTURE ROUTE DESCRIPTION

TAKEOFF RWY 11: Track to KBL VOR/DME via R-287, at 1.1 DME prior to KBL, turn right to intercept R-195 to 18 DME, climb to assigned altitude and proceed via assigned routing.

TAKEOFF RWY 29: Track via R-287 to 7.1 DME. Turn right to intercept R-307 direct KBL. Proceed out R-195 to 18 DME, climb to assigned altitude and proceed via assigned routing