

KABUL, AFGHANISTAN

ILS or LOC/DME RWY 29

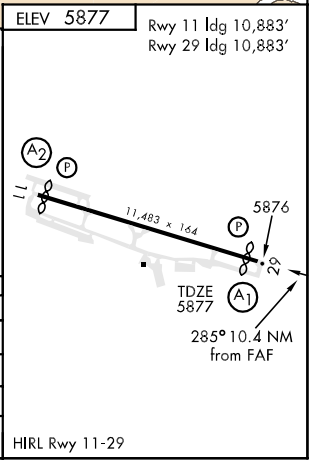
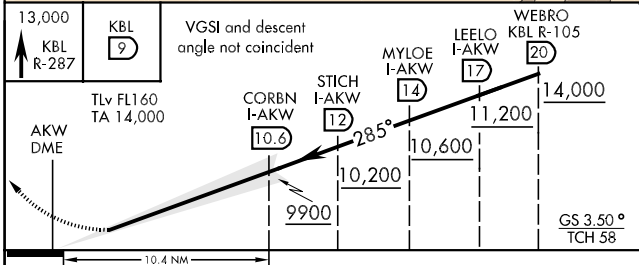
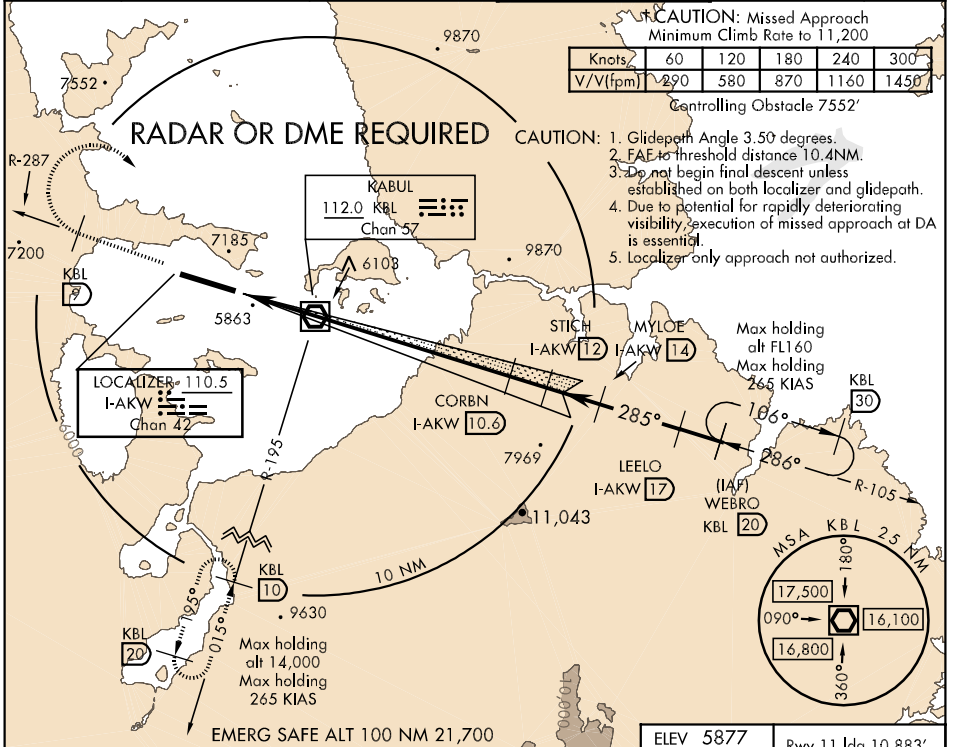
LOC/DME I-AKW 110.5 Chan 42	APCH CRS 285°	Rwy Idg 10,883 TDZE 5877 Arpt Elev 5877
--	-------------------------	--

AL-1190 [USAF]

KABUL INTL (OAKB)

<p>⚠ When ALS inop, increase vis to 2400m. **When ALS inop, increase CAT ABCDE vis to 1600m.</p>	<p>ALSF-1 ⓐ</p>	<p>† MISSED APPROACH: Climb to 13,000 KBL R-287 to 9 DME, then turn right direct KBL VOR/DME, cross KBL VOR/DME at or above 11,200 then proceed out the KBL R-195 to 10 DME and hold.</p>
--	---------------------	---

ATIS 130.15	KABUL APP CON 131.6 360.6	BAGRAM APP CON 133.35 379.3	KABUL TOWER 129.4 284.275 134.5	GND CON 120.30	PAR/ASR
-----------------------	-------------------------------------	---------------------------------------	---	--------------------------	---------



CATEGORY	A	B	C	D	E
S-ILS 29*		6351-1600m	474 (500-1600m)		NA
S-LOC 29	NOT AUTHORIZED				
CIRCLING	NOT AUTHORIZED				
S-PAR 29**	6156-800m 279 (300-800m)		6156-1200m 279 (300-1200m)		GS 3.50°

HIRL Rwy 11-29

KABUL, AFGHANISTAN
Amdt 1 08325

34°34'N-069°13'E

KABUL INTL (OAKB)

ILS or LOC/DME RWY 29

Effective 18 DEC 2008 - 15 JAN 2009