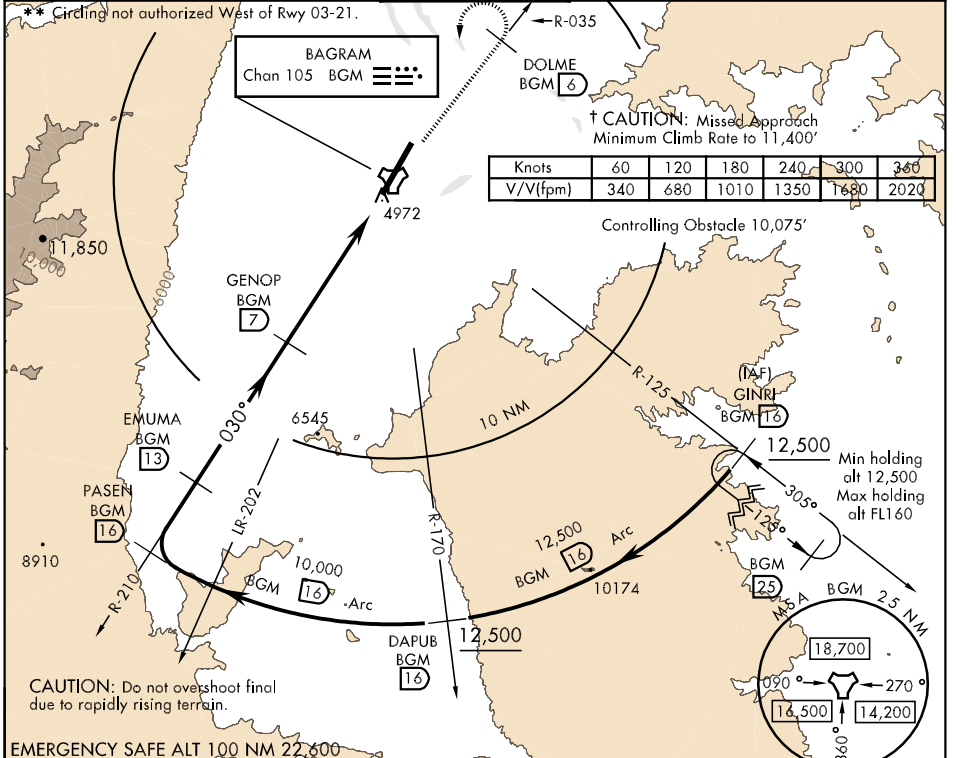


TACAN BGM Chan 105	APCH CRS 030°	Rwy Idg 11,819 TDZE 4868 Arpt Elev 4895	AL-3093 [USAF]	BAGRAM (OAIx)
-----------------------	------------------	---	----------------	---------------

A1 \* When ALS inop, increase CAT A8 vis to 2000m, CAT C vis to 3200m, CAT D vis to 3600m, CAT E vis to 4000m.
 † MISSED APPROACH: Climb to 12,500 via BGM TACAN R-035 to DOLME then left hand climbing turn direct BGM TACAN, then outbound BGM R-125 to GINRI and hold, continue climb-in-hold to 12,500.

ATIS <b>134.25 369.4</b>	BAGRAM APP CON <b>133.35 379.3</b>	BAGRAM TOWER <b>118.5 325.75</b>	GND CON <b>125.9 380.8</b>	PAR
-----------------------------	---------------------------------------	-------------------------------------	-------------------------------	-----



PASEN BGM 16 R-210 10,000 030° 9200 EMUMA 13 GENOP 7 7300 KUMDU 1.5 TACAN DOLME BGM 6 12,500 BGM R-035 ELEV 4895 Non-std Rwy and PAPI lighting REIL Rwy 03-21 MIRL Rwy 03-21 11,819 x 130 03 030° to TACAN	TLV FL160 TA 14,000 5.5 NM 0.9 NM	CATEGORY A B C D E
S-03 * 5540-1200m 672 (700-1200m)	5540-2400m 672 (700-2400m)	5540-2800m 672 (700-2800m)
CIRCLING ** 5540-2000m 645 (700-2000m)	5540-3200m 645 (700-3200m)	5540-3600m 645 (700-3600m)
5540-4800m 1185 (1200-4800m)	6080-4800m 1185	6080-4800m 1185