

APCH CRS	Rwy Idg	11,819
027°	TDZE	4868
	Arpt Elev	4895

AL-3093 [USAF]

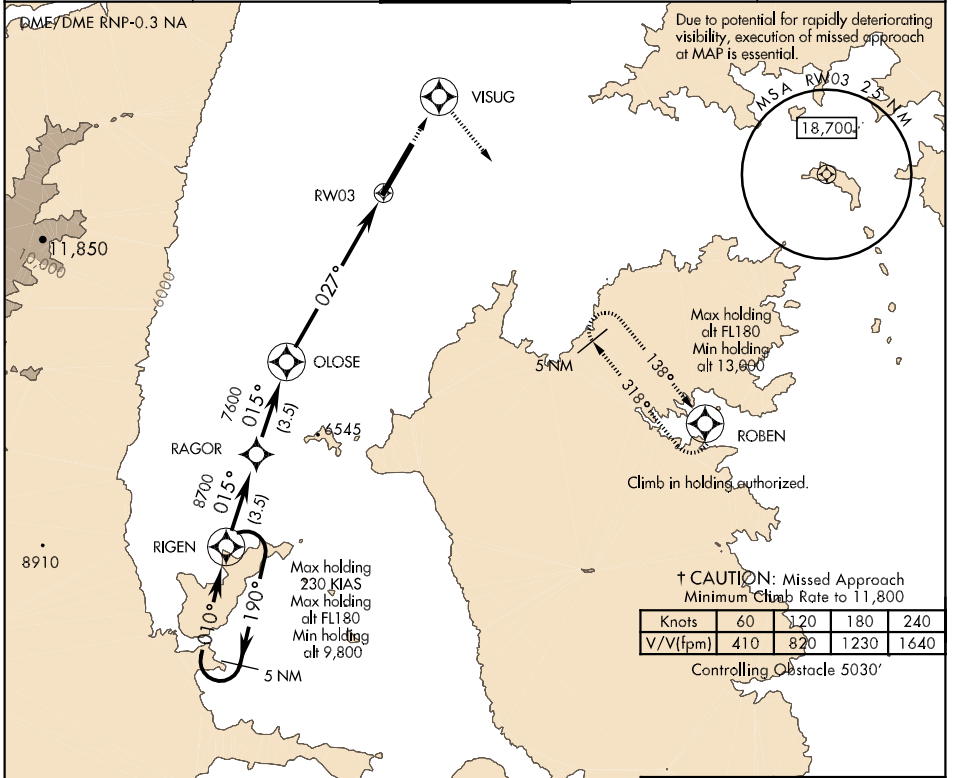
BAGRAM (OAIX)

▼ * When ALS inop, increase CAT A/B vis to 1600m, CAT C vis to 3200m, and CAT D vis to 3600m. CAT E not authorized.
 ** Circling not authorized West of RWY 03-21.



† MISSED APPROACH: Climb to 13,000 direct VISUG then turn right, track 138° to ROBEN. Maintain ATC assigned altitude and hold.

ATIS 134.25 369.4	BAGRAM APP CON 133.35 379.3	BAGRAM TOWER 118.5 325.75	GND CON 125.9 380.8	PAR
-----------------------------	---------------------------------------	-------------------------------------	-------------------------------	-----

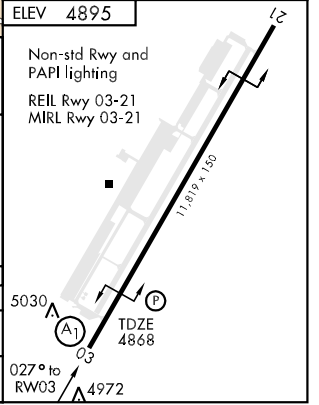
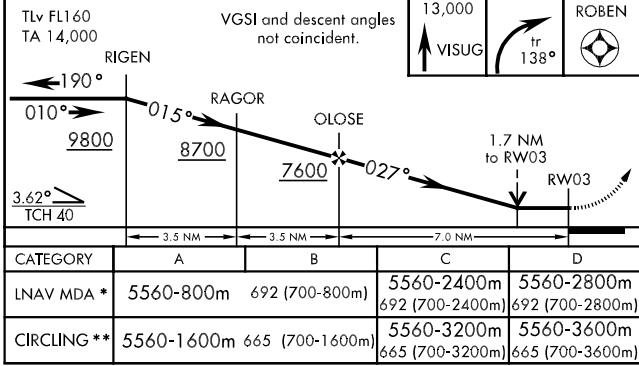


† CAUTION: Missed Approach
Minimum Climb Rate to 11,800

Knots	60	120	180	240
V/V (fpm)	410	820	1230	1640

Controlling Obstacle 5030'

EMERGENCY SAFE ALT 100 NM 22,600 from RWY03



BAGRAM, AFGHANISTAN 34°57'N-69°11'E BAGRAM (OAIX)

Orig 09351

Effective 14 JAN 2010 - 11 FEB 2010