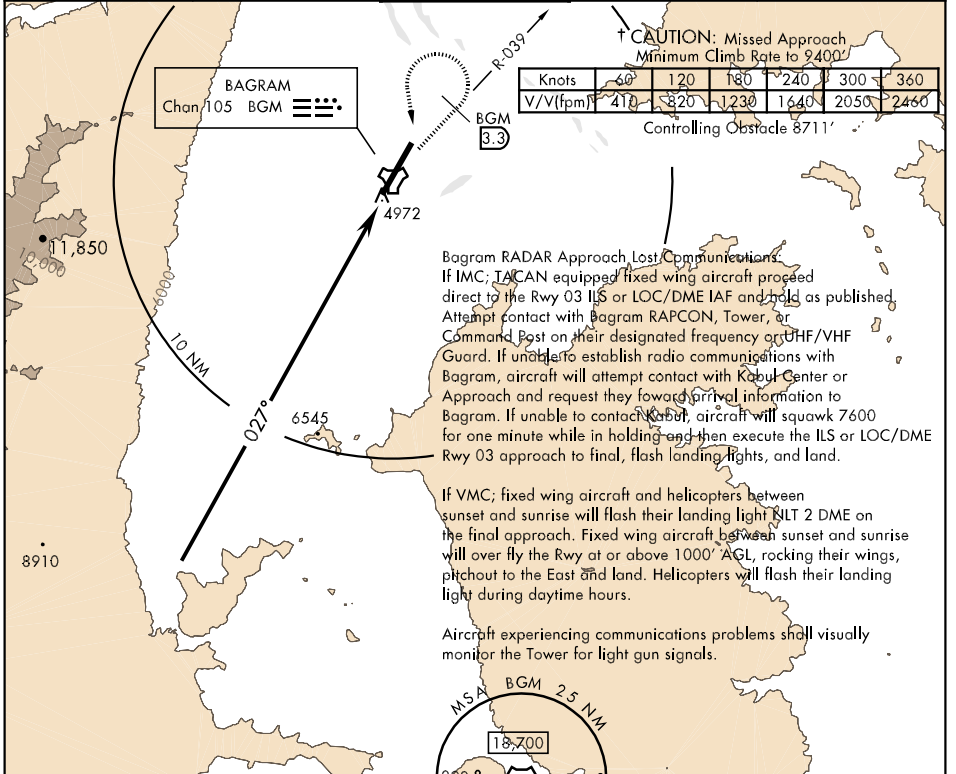


APCH CRS 027°	Rwy ldg 11,819 TDZE 4868 Arprt Elev 4895	AL-3093 [USAF]	BAGRAM (OAIX)
-------------------------	---	----------------	---------------

<p>▼ * When ALS inop, increase vis to 1600m.</p>	<p>ALSF-1 A1</p> <p>† MISSED APPROACH: Climb to 10,000 via BGM R-039 to 3.3 DME, then turn left heading 169°. Expect RADAR vectors. TACAN required.</p>
--	---

ATIS 134.25 369.4	BAGRAM APP CON 133.35 379.3	BAGRAM TOWER 118.5 325.75	GND CON 125.9 380.8	PAR
-----------------------------	---------------------------------------	-------------------------------------	-------------------------------	-----



Bagram RADAR Approach Lost Communications:
 If IMC, TACAN equipped fixed wing aircraft proceed direct to the Rwy 03 ILS or LOC/DME IAF and hold as published. Attempt contact with Bagram RAPCON, Tower, or Command Post on their designated frequency or UHF/VHF Guard. If unable to establish radio communications with Bagram, aircraft will attempt contact with Kabul Center or Approach and request they forward arrival information to Bagram. If unable to contact Kabul, aircraft will squawk 7600 for one minute while in holding and then execute the ILS or LOC/DME Rwy 03 approach to final, flash landing lights, and land.

If VMC; fixed wing aircraft and helicopters between sunset and sunrise will flash their landing light **BLT 2 DME** on the final approach. Fixed wing aircraft between sunset and sunrise will over fly the Rwy at or above 1000' AGL, rocking their wings, pitchout to the East and land. Helicopters will flash their landing light during daytime hours.

Aircraft experiencing communications problems shall visually monitor the Tower for light gun signals.

