

MIRAB 2 DEPARTURE (RNAV)

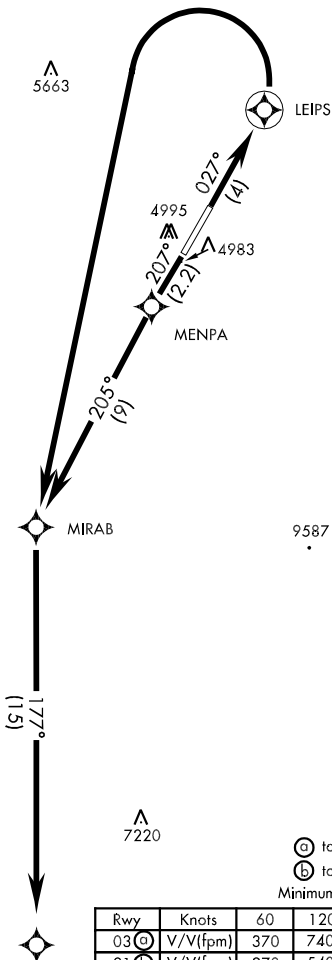
SHL-3093 [USAF]

BAGRAM, AFGHANISTAN

ATIS 134.25 369.4  
 GND CON  
 125.9 380.8  
 BAGRAM TOWER  
 118.5 325.75  
 BAGRAM DEP CON  
 133.35 379.3

GPS REQUIRED  
 RNAV 1

DME/DME RNP-0.3 NA



DEPARTURE ROUTE DESCRIPTION

TAKE-OFF RWY 03: Climb via heading 027° direct LEIPS , then turn left direct MIRAB. At MIRAB, turn left, track 177° to MURAD and then assigned routing. Maintain ATC assigned altitude.

TAKE-OFF RWY 21: Climb via heading 207° direct MENPA , then turn left, track 205° to MIRAB. At MIRAB, turn left, track 177° to MURAD and then assigned routing. Maintain ATC assigned altitude.

MIRAB 2 DEPARTURE (RNAV)

BAGRAM, AFGHANISTAN  
 BAGRAM (OAIX)