

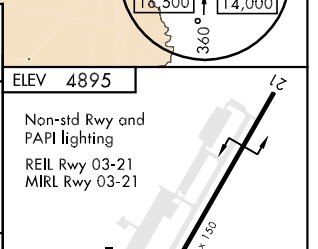
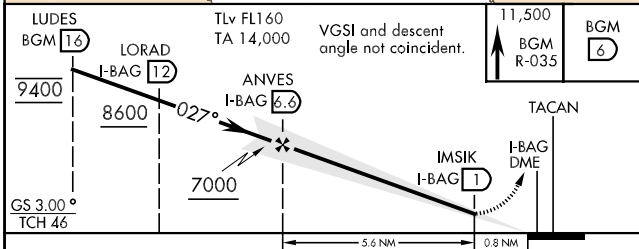
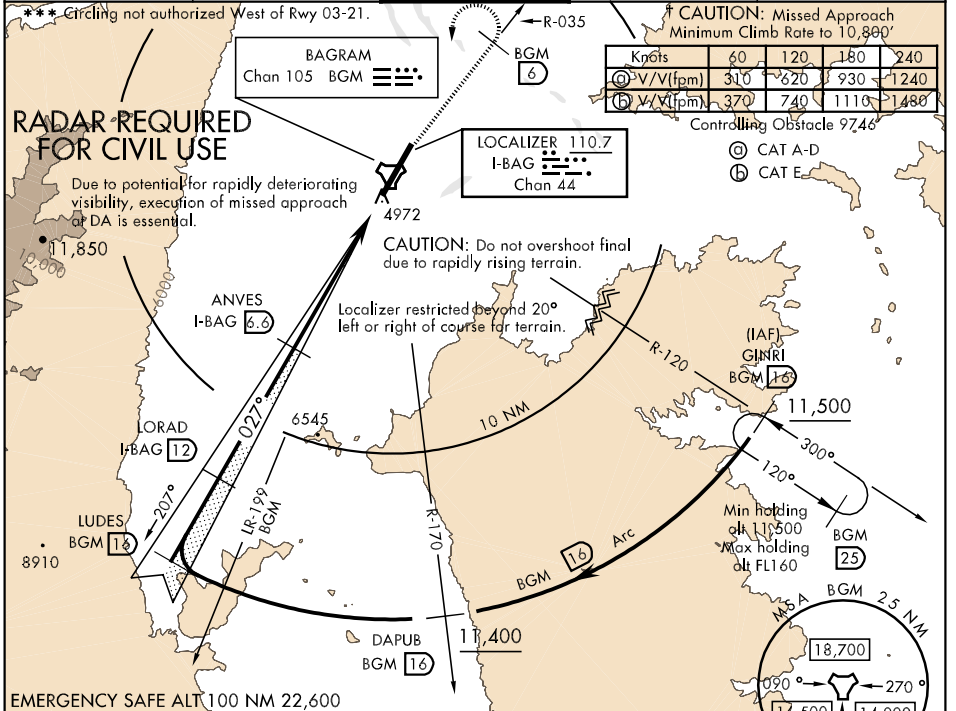
LOC/DME I-BAG <b>110.7</b> Chan <b>44</b>	APCH CRS <b>027°</b>	Rwy Idg <b>11,819</b> TDZE <b>4868</b> Arpt Elev <b>4895</b>	AL-3093 [USAF]	BAGRAM (OAIx)
-------------------------------------------------	-------------------------	--------------------------------------------------------------------	----------------	---------------

A1
T
M
S
I
S

\* When ALS inop, increase vis to 1600m.  
 \*\* When ALS inop, increase CAT AB vis to 1600m, CAT C vis to 2800m, CAT D vis to 3200m, CAT E vis to 3600m.

† MISSED APPROACH: Climb to 11,500 to BGM R-035/6 DME. At 6 DME turn left direct BGM TACAN. Then intercept BGM R-120 to GINRI and hold.

ATIS <b>134.25 250.0</b>	BAGRAM APP CON <b>133.35 379.3</b>	BAGRAM TOWER <b>118.5 325.75</b>	GND CON <b>125.9 380.8</b>	PAR
-----------------------------	---------------------------------------	-------------------------------------	-------------------------------	-----



CATEGORY	A	B	C	D	E
S-ILS 03*	5150-1200m		282	(300-1200m)	
S-LOC 03**	5500-800m	5500-2000m	5500-2400m	5500-2800m	5500-2800m
	632 (700-800m)	632 (700-2000m)	632 (700-2400m)	632 (700-2800m)	632 (700-2800m)
CIRCLING ***	5500-1600m	5500-2800m	5500-3200m	5500-3600m	5500-3600m
	605 (700-1600m)	605 (700-2800m)	605 (700-3200m)	605 (700-3600m)	605 (700-3600m)
S-PAR 03*	5168-1200m		300	(300-1200m) GS 3.0°	

