

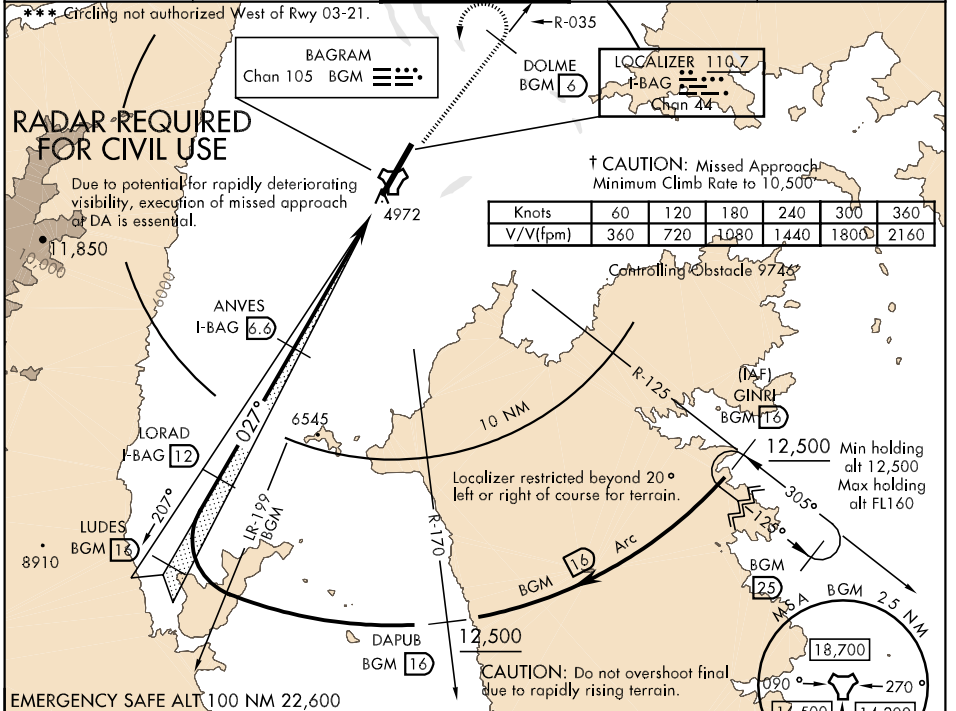
BAGRAM, AFGHANISTAN

# ILS or LOC/DME RWY 03

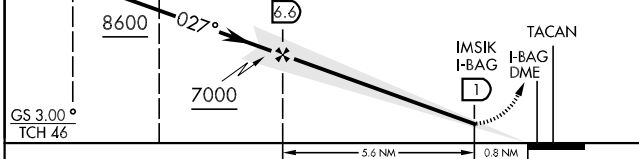
LOC/DME I-BAG <b>110.7</b> Chan <b>44</b>	APCH CRS <b>027°</b>	Rwy Idg <b>11,819</b> TDZE <b>4868</b> Arpt Elev <b>4895</b>	AL-3093 [USAF]	BAGRAM (OAIx)
---	-------------------------	--	----------------	---------------

A1
ALSIF-1
MISSED APPROACH: Climb to 12,500 to DOLME (BGM TACAN R-035/6 DME). At 6 DME turn left direct BGM intercept BGM R-125 to GINRI and hold.

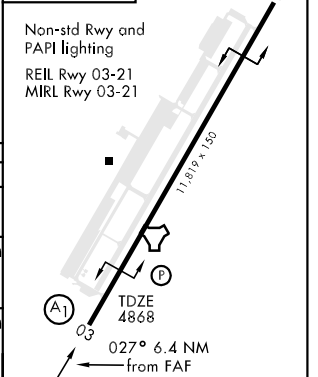
ATIS <b>134.25 369.4</b>	BAGRAM APP CON <b>133.35 379.3</b>	BAGRAM TOWER <b>118.5 325.75</b>	GND CON <b>125.9 380.8</b>	PAR
-----------------------------	---------------------------------------	-------------------------------------	-------------------------------	-----



LUDES BGM 16	LORAD I-BAG 12	Tlv FL160 TA 14,000	ANVES I-BAG 6.6	VGS1 and descent angle not coincident.	12,500 BGM R-035	DOLME BGM 6
--------------	----------------	------------------------	-----------------	--	------------------	-------------



CATEGORY	A	B	C	D	E
S-ILS 03*	5150-800m 282 (300-800m)		5150-1200m	282 (300-1200m)	
S-LOC 03**	5500-800m 632 (700-800m)		5500-2000m 632 (700-2000m)	5500-2400m 632 (700-2400m)	5500-2800m 632 (700-2800m)
CIRCLING ***	5500-1600m 605 (700-1600m)		5500-2800m 605 (700-2800m)	5500-3200m 605 (700-3200m)	6080-4800m 1185 (1200-4800m)



BAGRAM, AFGHANISTAN 34°57'N-69°16'E BAGRAM (OAIx)

Amtd 2 09351

# ILS or LOC/DME RWY 03

Effective 14 JAN 2010 - 11 FEB 2010