

# FYDER 2 DEPARTURE

SHL-3093 [USAF]

BAGRAM (OAX)  
BAGRAM, AFGHANISTAN

ATIS 134.25 369.4  
GND CON 125.9 380.8  
BAGRAM TOWER 118.5 325.75  
BAGRAM DEP CON 133.35 379.3

Rwy	Knots	60	120	180	240	300	360
03	V/V(fpm)	480	960	1440	1920	2400	2880

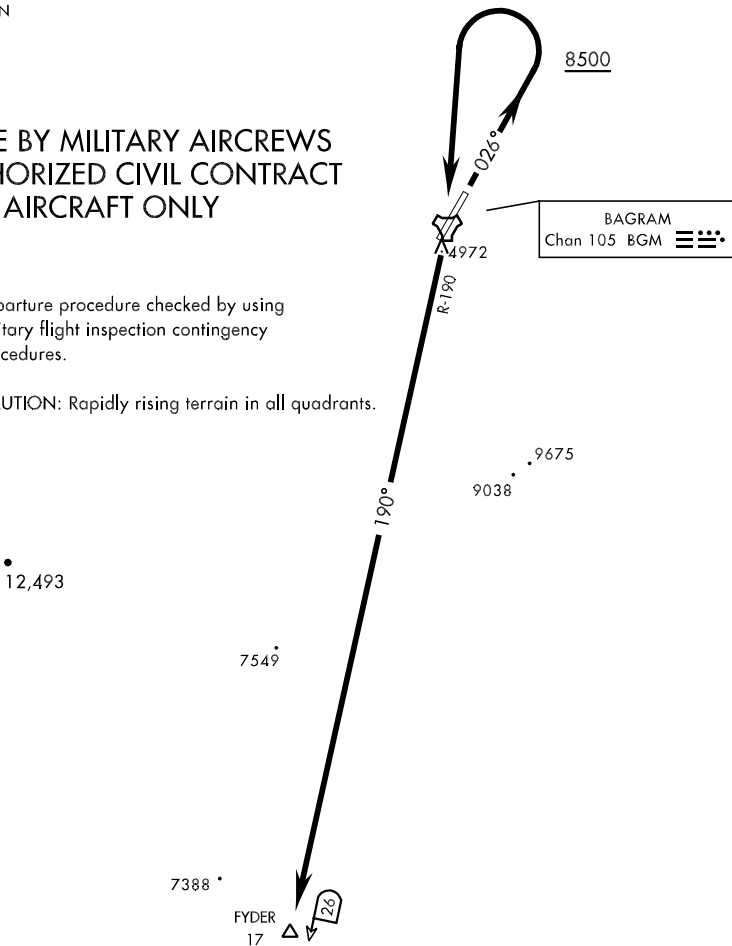
Λ  
9225

Minimum Climb Rate to 11,300

## FOR USE BY MILITARY AIRCREWS OR AUTHORIZED CIVIL CONTRACT AIRCRAFT ONLY

Departure procedure checked by using military flight inspection contingency procedures.

CAUTION: Rapidly rising terrain in all quadrants.



### DEPARTURE ROUTE DESCRIPTION

TAKE-OFF RWY 03; Track 026° climbing to assigned altitude, after leaving 8500 turn left direct BGM TACAN. Depart BGM R-190 to FYDER, then as directed by ATC.