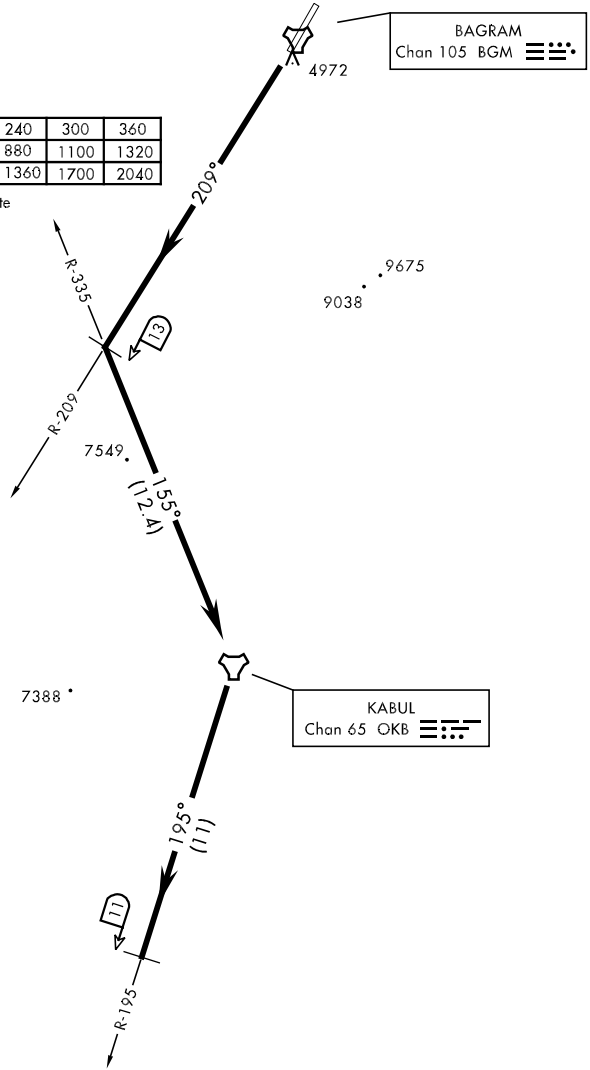


ATIS 134.25 369.4
GND CON
125.9 380.8
BAGRAM TOWER
118.5 325.75
BAGRAM DEP CON
133.35 379.3

Rwy	Knots	60	120	180	240	300	360
* 21 (a)	V/V(fpm)	220	440	660	880	1100	1320
† 21 (b)	V/V(fpm)	340	680	1020	1360	1700	2040

* Minimum † ATC Climb Rate

- (a) to 11,900
- (b) to 16,000



RADAR REQUIRED

BAGRAM
Chan 105 BGM

KABUL
Chan 65 OKB

DEPARTURE ROUTE DESCRIPTION

TAKE-OFF RWY 21: Climb on BGM R-209 to BGM 13 DME. At 13 DME, turn left and intercept OKB TACAN R-335 direct OKB. Then intercept OKB R-195 outbound to OKB 11 DME, maintain ATC assigned altitude.